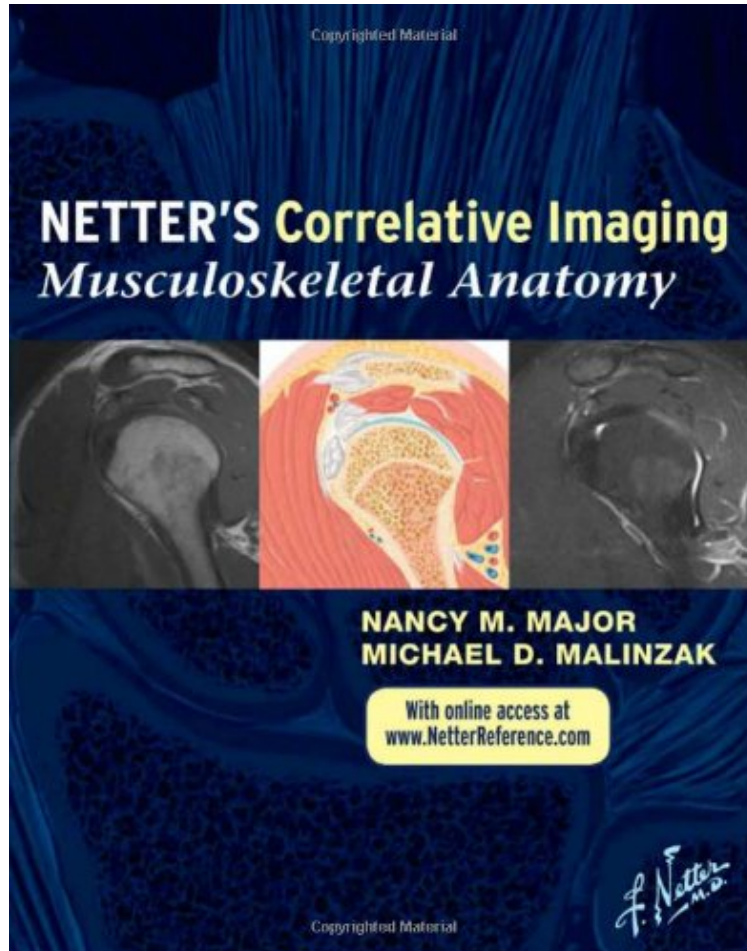


[Mobile ebook] Netter's Correlative Imaging: Musculoskeletal Anatomy: with Online Access at [www.NetterReference.com](http://www.NetterReference.com), 1e (Netter Clinical Science)

## **Netter's Correlative Imaging: Musculoskeletal Anatomy: with Online Access at [www.NetterReference.com](http://www.NetterReference.com), 1e (Netter Clinical Science)**

*Nancy M. Major MD, Michael D. Malinzak MD PhD  
DOC | \*audiobook | ebooks | Download PDF | ePub*



[Download](#)

[Read Online](#)

#1954500 in Books Saunders 2011-02-22 Original language: English PDF # 1 11.10 x 1.30 x 8.70l, 4.89 #File Name: 1437700128639 pages | File size: 69.Mb

**Nancy M. Major MD, Michael D. Malinzak MD PhD : Netter's Correlative Imaging: Musculoskeletal Anatomy: with Online Access at [www.NetterReference.com](http://www.NetterReference.com), 1e (Netter Clinical Science)** before purchasing it in order to gauge whether or not it would be worth my time, and all praised Netter's Correlative Imaging: Musculoskeletal Anatomy: with Online Access at [www.NetterReference.com](http://www.NetterReference.com), 1e (Netter Clinical Science):

Musculoskeletal Anatomy is the first title in the brand new Netters Correlative Imaging series. Series editor and

specialist in musculoskeletal imaging Dr. Nancy Major and coauthor, Michael Malinzak, presents Netters beautiful and instructive paintings and illustrated cross sections created in the Netter style side-by-side with high-quality patient MR images created with commonly used pulse sequences to help you visualize the anatomy section by section. With in-depth coverage and concise descriptive text for at-a-glance information and access to correlated images online, this atlas is a comprehensive reference thats ideal for todays busy imaging specialists. View upper and lower limbs in sagittal, coronal, and axial view MRs of commonly used pulse sequences, each slice complemented by a detailed illustration in the instructional and aesthetic Netter style. Find anatomical landmarks quickly and easily through comprehensive labeling and concise text highlighting key points related to the illustration and image pairings. Correlate patient data to idealized normal anatomy in the approximately 30 cross-sections per joint that illustrate the complexities of musculoskeletal anatomy. Scroll through the correlated images online at [www.NetterReference.com](http://www.NetterReference.com). Receive clarity and guidance for your practice, through the unique pairing of Netter art and clinical imaging